

# Specification

Lithium Polymer Battery Pack LP905456 3500mAh 3.7V with Protection Circuit Module (PCM)  
 This data sheet describes the requirements and properties of lithium polymer rechargeable battery pack manufactured by LiPol Battery Co., Ltd - China

## Mechanical Characteristics

- Cell ▶ LP905456
- PCM ▶ Yes
- NTC ▶ No
- Configuration ▶ 1S1P
- Weight ▶ appr. 70g
- Connector ▶ JST SYP-02T-1

## Electrical Specification

- Rated Capacity ▶ 3500mAh min, 3520mAh typ.
- Nominal Voltage ▶ 3.7V
- Wat-Hour Rating ▶ 12.95Wh
- Max. Operating Voltage Range ▶ 2.75V to 4.20V
- Max. Charge Voltage ▶ 4.2V ± 50mV
- Max. Charge Current ▶ 1750mA
- Max. Continuous Discharge Current ▶ 3500mA
- Discharge Cut Off ▶ 2.75V
- Internal Impedance ▶ <100mΩ
- Expected Cycle Life @ (0.5C/0.5C) @ 23±5°C ▶ 500 cycles ≥ 80%

## Cell Protection

- Overcharge Detection ▶ 4.275 ±50mV (0.7 to 1.3sec. delay, release 4.275V ±50mV)
- Overdischarge Detection ▶ 2.75V ±50mV (14 to 26msec. delay, resume 2.50V ± 50mV)
- Overcurrent Detection ▶ 4A to 4.5A (8 to 16msec. delay)

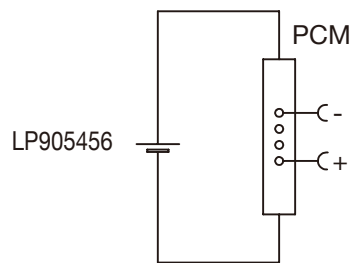
## Ambient Conditions

- Charge Temp. Range ▶ 0 to +45°C
- Discharge Temp. Range ▶ -20 to +60°C
- Storage Temp. Range ▶ 1 year at -20 to +30°C >70%
- ▶ 3 moths at -20 to +45°C >70%
- ▶ 1 month at -20 to +60°C >70%
- Humidity ▶ 65 ±20%RH

## Environmental and Safety

Please follow LiPol Handling and Safety Precautions for Lithium Polymer Battery. This battery meets the requirements of Battery Directives, and the battery parts are IEC 62133 & RoHS-Compliant. For more safety precautions and performance standards, please go to [www.lipolbattery.com/support.html](http://www.lipolbattery.com/support.html)

## Circuit diagram



Mae in mm	Freimateranzen	Date	Name	<b>LiPol Battery</b>		
All dimensions in mm	Generaltoleranzen	Erst. / Orig	23.05.2019		Xie Qingfang	
Als Betriebsgeheimnis anvertraut, alle Rechte vorbehalten	up to 6	0,1	Gepr./Check		23.05.2019	Guo Daxia
	over 6 up to 30	0,2	Benennung/ Designation		LP905456	
Proprietary data, company confidential, all rights reserved.	over 30 up to 100	0,3	Zchng. / Dwg. Nr.		3 FD_4230_20	
	over 100	0,5	Index			
		Original:		support@lipolbattery.com	www.LiPolBattery.com	