

30
double-sided
adhesive tape

40
adhesive tape kapton

20
PCM

10
LP802535

60
wire black (-)
AWG28 UL1571

50
wire red (+)
AWG28 UL1571

40
adhesive tape
kapton (2x)

8.0
 $+0.3$
 -0.3

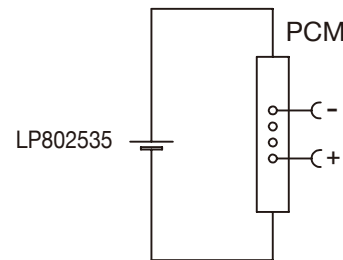
25
 $+0.5$
 -0.5

36
 $+1.0$
 -1.0

50
 $+3.0$
 -3.0

LiPo Battery 3.7V
LP802535 550mAh

Circuit Diagram



Specification

Lithium Polymer Battery Pack LP802535 550mAh 3.7V with Protection Circuit Module (PCM)
This data sheet describes the requirements and properties of lithium polymer rechargeable battery pack manufactured by LiPol Battery Co., Ltd - China

Mechanical Characteristics

Cell	▶ LP802535
PCM	▶ Yes
NTC	▶ No
Configuration	▶ 1S1P
Weight	▶ appr. 11.0g

Electrical Specification

Rated Capacity	▶ 550mAh min, 560mAh typ.
Nominal Voltage	▶ 3.7V
Wat-Hour Rating	▶ 2.04Wh
Max. Operating Voltage Range	▶ 2.75V to 4.20V
Max. Charge Voltage	▶ 4.2V \pm 50mV
Max. Charge Current	▶ 550mA
Standard Charge Current	▶ 275mA
Max. Discharge Current	▶ 550mA
Standard Discharge Current	▶ 275mA
Discharge Cut Off	▶ 2.75V
Internal Impedance	▶ <50m Ω
Expected Cycle Life @ (0.5C/0.5C) @ 23 \pm 5 $^{\circ}$ C	▶ 500 cycles \geq 80%

Cell Protection

Overcharge Detection	▶ 4.275 \pm 50mV (0.7 to 1.3sec. delay, release 4.275V \pm 50mV)
Overdischarge Detection	▶ 2.75V \pm 50mV (14 to 26msec. delay, resume 2.50V \pm 50mV)
Overcurrent Detection	▶ 2A to 2.5A (8 to 16msec. delay)

Ambient Conditions

Charge Temp. Range	▶ 0 to +45 $^{\circ}$ C
Discharge Temp. Range	▶ -20 to +60 $^{\circ}$ C
Storage Temp. Range	▶ 1 year at -20 to +30 $^{\circ}$ C >70%
	▶ 3 months at -20 to +45 $^{\circ}$ C >70%
	▶ 1 month at -20 to +60 $^{\circ}$ C >70%
Humidity	▶ 65 \pm 20%RH

Environmental and Safety

Please follow LiPol Handling and Safety Precautions for Lithium Polymer Battery.
This battery meets the requirements of Battery Directives, and the battery parts are IEC 62133 & RoHS-Compliant. For more safety precautions and performance standards, please go to www.lipolbattery.com/support.html

Mae in mm All dimensions in mm	Freimatoleranzen Generaltolerances	Date Erst. / Orig	Name Xie Qingfang	LiPol Battery	Index
Als Betriebsgeheimnis anvertraut, alle Rechte vorbehalten	up to 6 · 0,1 over 6 up to 30 · 0,2	Gepr./check	03.25.2021 Guo Daxia		
Proprietary data, company confidential, all rights reserved.	over 30 up to 100 · 0,3 over 100 · 0,5	Benennung/ Designation LP802535		Zchg. / Dwg. Nr. 1 FD_5013_10	
		Origin:	support@lipolbattery.com	www.LiPolBattery.com	