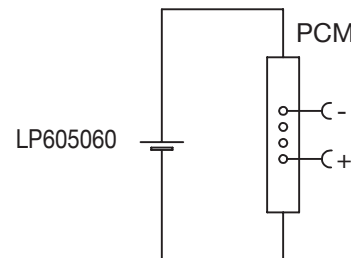


Circuit diagram



Specification

Lithium Polymer Battery Pack LP605060 2800mAh 3.7V with Protection Circuit Module (PCM)
This data sheet describes the requirements and properties of lithium polymer rechargeable battery pack manufactured by LiPol Battery Co., Ltd - China

Mechanical Characteristics

- Cell ▶ LP605060
- PCM ▶ Yes
- NTC ▶ No
- Configuration ▶ 1S1P
- Weight ▶ appr. 56g
- Connector ▶ Molex 50-37-5023(B)

Electrical Specification

- Rated Capacity ▶ 2800mAh min, 2830mAh typ.
- Nominal Voltage ▶ 3.7V
- Wat-Hour Rating ▶ 10.36Wh
- Max. Operating Voltage Range ▶ 2.75V to 4.20V
- Max. Charge Voltage ▶ 4.2V ±50mV
- Max. Charge Current ▶ 1400mA
- Discharge Current ▶ 2800mA
- Discharge Cut Off ▶ 2.75V
- Internal Impedance ▶ <200mΩ
- Expected Cycle Life @ (0.5C/0.5C) @ 23±5°C ▶ 500 cycles ≥ 80%

Cell Protection

- Overcharge Detection ▶ 4.275 ±50mV (0.7 to 1.3sec. delay, release 4.275V ±50mV)
- Overdischarge Detection ▶ 2.75V ±50mV (14 to 26msec. delay, resume 2.50V ± 50mV)
- Overcurrent Detection ▶ 2A to 4.5A (8 to 16msec. delay)

Ambient Conditions

- Charge Temp. Range ▶ 0 to +45°C
- Discharge Temp. Range ▶ -20 to +60°C
- Storage Temp. Range ▶ 1 year at -20 to +30°C >70%
- Overcurrent Detection ▶ 3 moths at -20 to +45°C >70%
- Humidity ▶ 1 month at -20 to +60°C >70%
- ▶ 65 ±20%RH

Environmental and Safety

Please follow LiPol Handling and Safety Precautions for Lithium Polymer Battery. This battery meets the requirements of Battery Directives, and the battery parts are IEC 62133 & RoHS-Compliant. For more safety precautions and performance standards, please go to www.lipolbattery.com/support.html

Mae in mm All dimensions in mm	Freimatoleranzen Generaltolerances	Date 07.09.2019	Name Xie Qingfang	LiPol Battery
Als Betriebsgeheimnis anvertraut, alle Rechte vorbehalten	up to 6 · 0,1 over 6 up to 30 · 0,2	Erst. / Orig 07.09.2019	Gepr./Check Guo Daxia	
Proprietary data, company confidential, all rights reserved.	over 30 up to 100 · 0,3 over 100 · 0,5	Benennung/ Designation LP605060		Zchng. / Dwg. Nr. 3 FD_2145_67
support@lipolbattery.com			www.LiPolBattery.com	