

30
double-sided
adhesive tape

40
adhesive tape kapton

20
PCM

10
LP451528

60
wire black (-)
AWG28 UL1007

50
wire red (+)
AWG28 UL1007

40
adhesive tape
kapton (2x)

4.5 $+0.3$
 -0.3

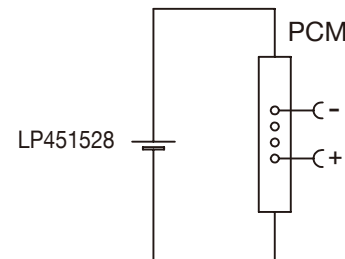
28 $+1.0$
 -1.0

50 $+3.0$
 -3.0

15 $+0.5$
 -0.5

LiPo Battery 3.7V
LP451528 150mAh

Circuit Diagram



Specification

Lithium Polymer Battery Pack LP451528 150mAh 3.7V with Protection Circuit Module (PCM)
This data sheet describes the requirements and properties of lithium polymer rechargeable battery pack manufactured by LiPol Battery Co., Ltd - China

Mechanical Characteristics

| | |
|---------------|------------|
| Cell | ▶ LP451528 |
| PCM | ▶ Yes |
| NTC | ▶ No |
| Configuration | ▶ 1S1P |
| Weight | ▶ appr. 3g |

Electrical Specification

| | |
|---|---------------------------|
| Rated Capacity | ▶ 150mAh min, 155mAh typ. |
| Nominal Voltage | ▶ 3.7V |
| Wat-Hour Rating | ▶ 0.555Wh |
| Max. Operating Voltage Range | ▶ 2.75V to 4.20V |
| Max. Charge Voltage | ▶ 4.2V ± 50 mV |
| Max. Charge Current | ▶ 75mA |
| Max. Continuous Discharge Current | ▶ 150w mA |
| Discharge Cut Off | ▶ 2.75V |
| Internal Impedance | ▶ <200m Ω |
| Expected Cycle Life @ (0.5C/0.5C) @ 23 ± 5 °C | ▶ 500 cycles $\geq 80\%$ |

Cell Protection

| | |
|-------------------------|--|
| Overcharge Detection | ▶ 4.275 ± 50 mV (0.7 to 1.3sec. delay, release 4.275V ± 50 mV) |
| Overdischarge Detection | ▶ 2.75V ± 50 mV (14 to 26msec. delay, resume 2.50V ± 50 mV) |
| Overcurrent Detection | ▶ 2A to 4.5A (8 to 16msec. delay) |

Ambient Conditions

| | |
|-----------------------|---------------------------------|
| Charge Temp. Range | ▶ 0 to +45°C |
| Discharge Temp. Range | ▶ -20 to +60°C |
| Storage Temp. Range | ▶ 1 year at -20 to +30°C >70% |
| | ▶ 3 months at -20 to +45°C >70% |
| | ▶ 1 month at -20 to +60°C >70% |
| Humidity | ▶ 65 $\pm 20\%$ RH |

Environmental and Safety

Please follow LiPol Handling and Safety Precautions for Lithium Polymer Battery. This battery meets the requirements of Battery Directives, and the battery parts are IEC 62133 & RoHS-Compliant. For more safety precautions and performance standards, please go to www.lipolbattery.com/support.html

| | | | | | |
|--|---|------------------------------------|--------------------------|------------------------------------|-------|
| Mae in mm All dimensions in mm | Freimatoleranzen Generaltoleranzen | Date 28.10.2019 | Name Xie Qingfang | LiPol Battery | Index |
| Als Betriebsgeheimnis anvertraut, alle Rechte vorbehalten | up to 6 · 0,1 over 6 up to 30 · 0,2 | Erst. / Orig 28.10.2019 | Gepr./check Guo Daxia | | |
| Proprietary data, company confidential, all rights reserved. | over 30 up to 100 · 0,3 over 100 · 0,5 | Benennung/ Designation LP451528 | | Zchgng. / Dwg. Nr. 3 FD_1528_70 | |
| | | Origin: | support@lipolbattery.com | www.LiPolBattery.com | |