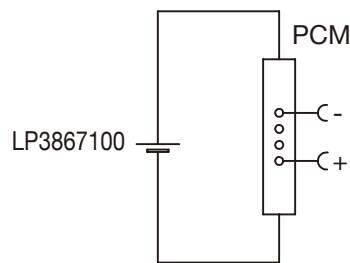


**Circuit diagram**



# Specification

Lithium Polymer Battery Pack LP3867100 2400mAh 3.7V with Protection Circuit Module (PCM)  
 This data sheet describes the requirements and properties of lithium polymer rechargeable battery pack manufactured by LiPol Battery Co., Ltd - China

## Mechanical Characteristics

- Cell ▶ LP3867100
- PCM ▶ Yes
- NTC ▶ No
- Configuration ▶ 1S1P
- Weight ▶ appr. 48g
- Connector ▶ JST SYR-02T

## Electrical Specification

- Rated Capacity ▶ 2400mAh min, 2430mAh typ.
- Nominal Voltage ▶ 3.7V
- Wat-Hour Rating ▶ 8.88Wh
- Max. Operating Voltage Range ▶ 2.75V to 4.20V
- Max. Charge Voltage ▶ 4.2V ±50mV
- Max. Charge Current ▶ 1200mA
- Max. Continuous Discharge Current ▶ 2400mA
- Discharge Cut Off ▶ 2.75V
- Internal Impedance ▶ <200mΩ
- Expected Cycle Life @ (0.5C/0.5C) @ 23±5°C ▶ 500 cycles ≥ 80%

## Cell Protection

- Overcharge Detection ▶ 4.275 ±50mV (0.7 to 1.3sec. delay, release 4.275V ±50mV)
- Overdischarge Detection ▶ 2.75V ±50mV (14 to 26msec. delay, resume 2.50V ± 50mV)
- Overcurrent Detection ▶ 4A to 4.5A (8 to 16msec. delay)

## Ambient Conditions

- Charge Temp. Range ▶ 0 to +45°C
- Discharge Temp. Range ▶ -20 to +60°C
- Storage Temp. Range ▶ 1 year at -20 to +30°C >70%
- ▶ 3 months at -20 to +45°C >70%
- ▶ 1 month at -20 to +60°C >70%
- Humidity ▶ 65 ±20%RH

## Environmental and Safety

Please follow LiPol Handling and Safety Precautions for Lithium Polymer Battery. This battery meets the requirements of Battery Directives, and the battery parts are IEC 62133 & RoHS-Compliant. For more safety precautions and performance standards, please go to [www.lipolbattery.com/support.html](http://www.lipolbattery.com/support.html)

Mae in mm All dimensions in mm	Freimatoleranzen Generaltolerances	Date 24.05.2019	Name Xie Qingfang	
			Erst. / Orig	
Als Betriebsgeheimnis anvertraut, alle Rechte vorbehalten	up to 6 up to 30	0,1 0,2	Gepr./Check 24.05.2019 Guo Daxia	
	over 30 up to 100	0,3	Benennung/ Designation LP3867100	
Proprietary data, company confidential, all rights reserved.	over 100	0,5	Original:	
			Zchng. / Dwg. Nr. 3 FD_3255_70	
			Index	
			support@lipolbattery.com	
			www.LiPolBattery.com	

# LiPol Battery