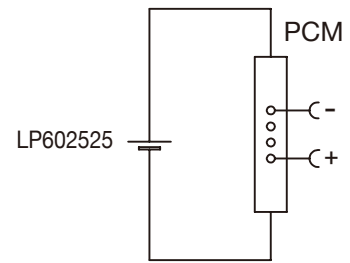


Circuit Diagram



Specification

Lithium Polymer Battery Pack LP602525 3.7V 300mAh with Protection Circuit Module (PCM)
 This data sheet describes the requirements and properties of lithium polymer rechargeable battery pack manufactured by LiPol Battery Co., Ltd - China

Mechanical Characteristics

- Cell ▶ LP602525
- PCM ▶ Yes
- NTC ▶ No
- Configuration ▶ 1S1P
- Weight ▶ appr. 6.0g

Electrical Specification

- Rated Capacity ▶ 300mAh min, 310mAh typ.
- Nominal Voltage ▶ 3.7V
- Wat-Hour Rating ▶ 1.11Wh
- Max. Operating Voltage Range ▶ 2.75V to 4.20V
- Max. Charge Voltage ▶ 4.2V ±50mV
- Max. Charge Current ▶ 300mA
- Standard Charge Current ▶ 150mA
- Max. Continuous Discharge Current ▶ 300mA
- Standard Discharge Current ▶ 150mA
- Discharge Cut Off ▶ 2.75V
- Internal Impedance ▶ <100mΩ
- Expected Cycle Life @ (0.5C/0.5C) @ 23±5°C ▶ 500 cycles ≥ 80%

Cell Protection

- Overcharge Detection ▶ 4.275 ±50mV (0.7 to 1.3sec. delay, release 4.275V ±50mV)
- Overdischarge Detection ▶ 2.75V ±50mV (14 to 26msec. delay, resume 2.50V ±50mV)
- Overcurrent Detection ▶ 2.0A to 2.5A (8 to 16msec. delay)

Ambient Conditions

- Charge Temp. Range ▶ +10°C to +45°C
- Discharge Temp. Range ▶ -20°C to +60°C
- Storage Temp. Range ▶ 1 year at -20°C to +30°C >70%
- ▶ 3 moths at -20°C to +45°C >70%
- ▶ 1 month at -20°C to +60°C >70%

Environmental and Safety

Please follow LiPol Handling and Safety Precautions for Lithium Polymer Battery. This battery meets the requirements of Battery Directives, and the battery parts are IEC62133-2-2017 & RoHS-Compliant. For more safety precautions and performance standards, please go to www.lipolbattery.com/support.html

Mae in mm	Freimatoleranzen	Date	Name	LiPol Battery	Index
All dimensions in mm	Generaltolerances	Erst. / Orig	25.12.2023		
Als Betriebsgeheimnis anvertraut, alle Rechte vorbehalten	up to 6	0,1	Gepr./check	25.12.2023	Guo Daxia
	over 6 up to 30	0,2			
Proprietary data, company confidential, all rights reserved.	over 30 up to 100	0,3	Benennung/ Designation		Zchnng. / Dwg. Nr.
	over 100	0,5	LP602525		
	Origin:			3	
			support@lipolbattery.com		www.LiPolBattery.com